

Bava Basra – Simanim

דף כה – Daf 25

פרק ב – לא יחפור

1. If the *Shechinah* is in מערב, or בכל מקום

Rebbe Akiva describes the west as "תדירא" – *constant*. The Gemara explain it means: תדירא בשכינה – *constant* regarding the presence of the *Shechinah*, as Rebbe Yehoshua ben Levi said: בואו ונחזיק טובה לאבותינו – *Come, let us show gratitude to our forefathers*, מקום תפלה – *who informed us of the [direction] of prayer*, as the *passuk* says: "וצבא השמים לך משתחוים" – *and the heavenly legions bow to You*, meaning the sun, moon, and stars "bow" while setting in the west. Rav Acha bar Yaakov asks that perhaps they are like a servant, and back away while bowing towards the east. The Gemara agrees that this is a difficulty. Rebbe Oshaya holds: מקום בכל מקום – *the Shechinah is everywhere*, because he explained a *passuk* saying that Hashem's messengers (the sun, etc.) are unique, because instead of returning to the place from where they were sent, למקום שמשלחין (מ)שם מחזירין שליחותן – *to the place they are sent, there they return* to report on their mission. Rebbe Yishmael also holds the *Shechinah* is everywhere, based on a *passuk* which describes two מלאכים leaving Hashem's presence as going towards each other. Rav Sheishess holds the *Shechinah* is everywhere, because he told his attendant to face him in any direction to *daven* except east, not because the *Shechinah* is not in the east, but because heretics teach to pray that way.

2. הרוצה שיחכים ידרים ושיעשיר יצפין

Rebbe Yitzchak said: הרוצה שיחכים ידרים – *One who wants to become wise should face south* when he *davens*, ושיעשיר יצפין – *and if he wants to become wealthy, he should face north*. He gives a *siman* to remember the directions: in the Beis Hamikdash, the שולחן (which held the לחם הפנים, symbolizing sustenance) was on the north side of the Heichal, and the Menorah (symbolizing Torah wisdom) was on the south side. Rebbe Yehoshua ben Levi said: לעולם ידרים – *One should always face south*, מתעשר – *because by becoming wise, he will also become wealthy*, because the *passuk* says: "בשמאלה עושר וכבוד" – *in [the Torah's] left hand are wealth and honor*. The Gemara asks that this contradicts Rebbe Yehoshua ben Levi's statement above, that the *Shechinah* is in the west, and one should *daven* in that direction!?! It answers: דמצדד אצדודי – *he should turn slightly to the south, but primarily face west*.

3. R' Yose holds one may plant a tree near a neighbor's pit, but agrees בגירי דיליה

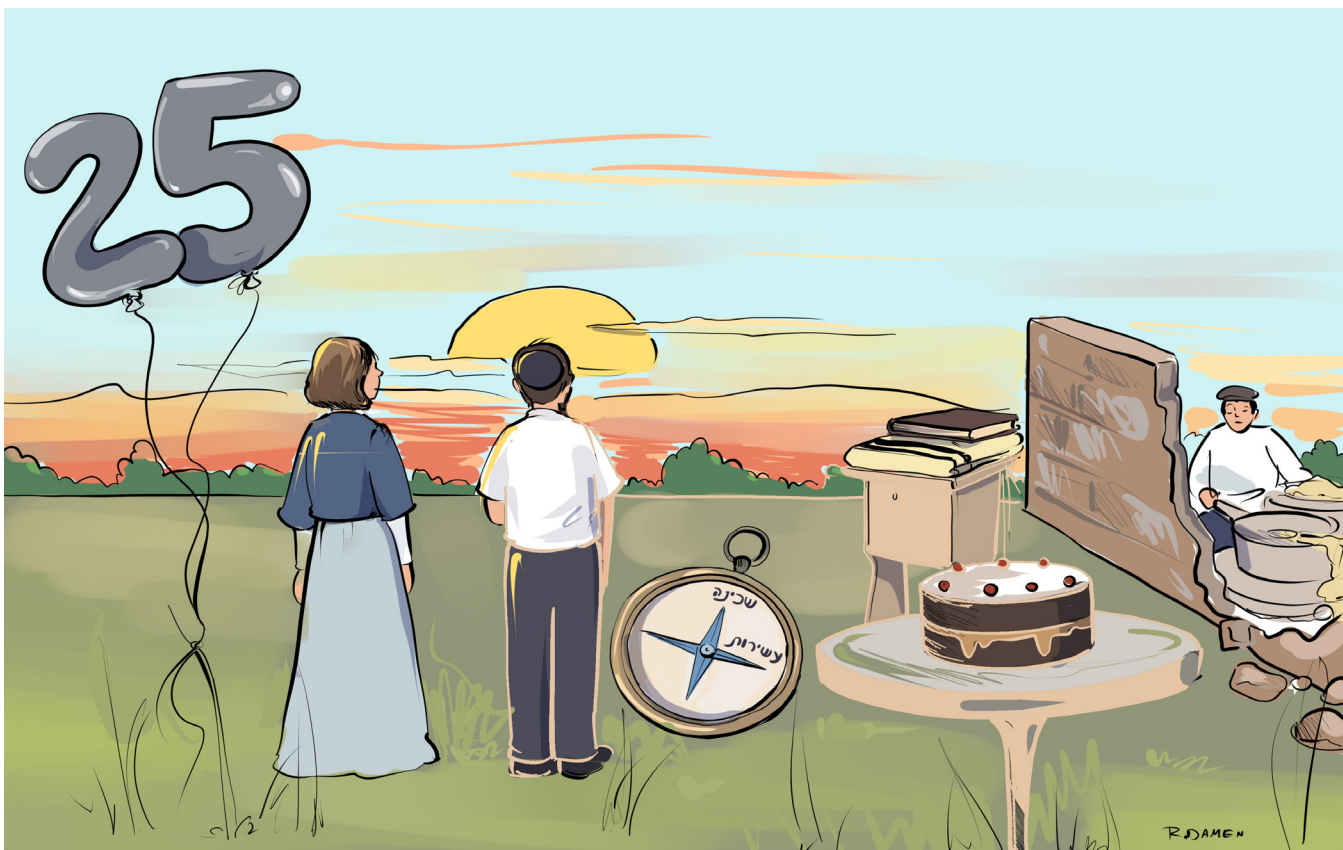
The next Mishnah states: מרחיקין את האילן מן הבור עשרים וחמש אמה – *one must distance a tree twenty-five amos from a neighbor's pit*, so the roots do not damage the pit's walls. If the pit preceded the tree, he must cut it down (but receives compensation). If the tree preceded the pit, he does not have to cut it down. Rebbe Yose says: אף על פי שהבור קודמת לאילן לא יקוץ – *even if the pit preceded the tree, he does not need to cut it down*, שזה חופר בתוך שלו – *for just as this one may dig a pit in his property, that one may plant a tree in his property*, regardless of the damage it may cause the pit. The Gemara on Daf 18 explained that he holds על הניזק להרחיק את עצמו – *it is incumbent upon the potential damaged party to distance himself* to avoid harm. Shmuel says the *halachah* follows Rebbe Yose. Rav Ashi reported what was said in Rav Kahana's Yeshiva: מודי ר' יוסי בגירי דידיה – *Rebbe Yose agrees regarding "his arrows"* (where the damage is direct) that the מזיק must distance himself. Therefore, Rav Ashi required sesame-seed pressers to move, because the vibrations from their pressing caused someone's mansion to tremble.

Siman – 25th Silver Anniversary

The 25th silver anniversary dinner that was held during **sunset, so the husband and wife could watch the sun "bow" as it set in the west where the Shechinah always rests and was set on a new golden table in the north side of the yard in the direction the wealthy husband always davened**, turned into a disaster **when the wall of the yard collapsed from the vibrations of the sesame seed pressers, who according to all opinions should have worked further away.**

דף כה | DAF 25

25th Silver anniversary



The 25th silver anniversary dinner that was held so the husband and wife could watch the sun "bow" as it set in the west where the Shechinah always rests, and was set on a new golden table in the north side of the yard in the direction the wealthy husband always davened, turned into a disaster when the wall of the yard collapsed from the vibrations of the sesame seed pressers, who according to all opinions should have worked further away.

3 things to remember

1. If the Shechinah is in מערב, or בכל מקום
2. הרוצה שיחכים ידרים ושיעשיר יצפין
3. Sesame seed pressers must move away because vibrations cause mansion to tremble

